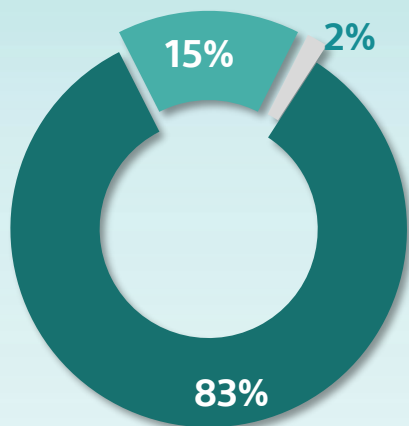
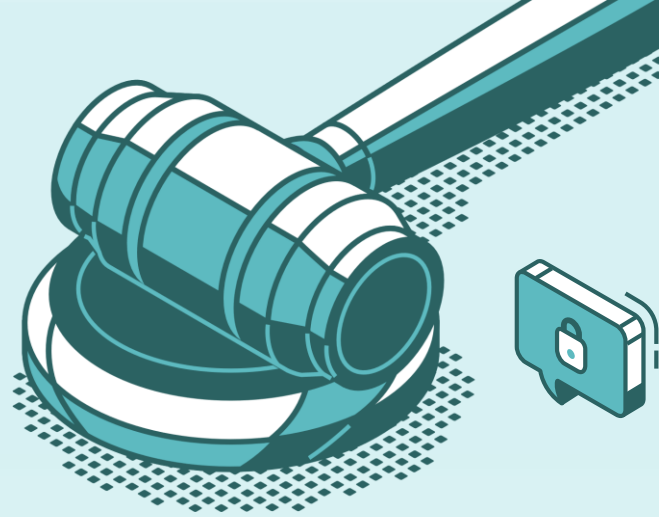


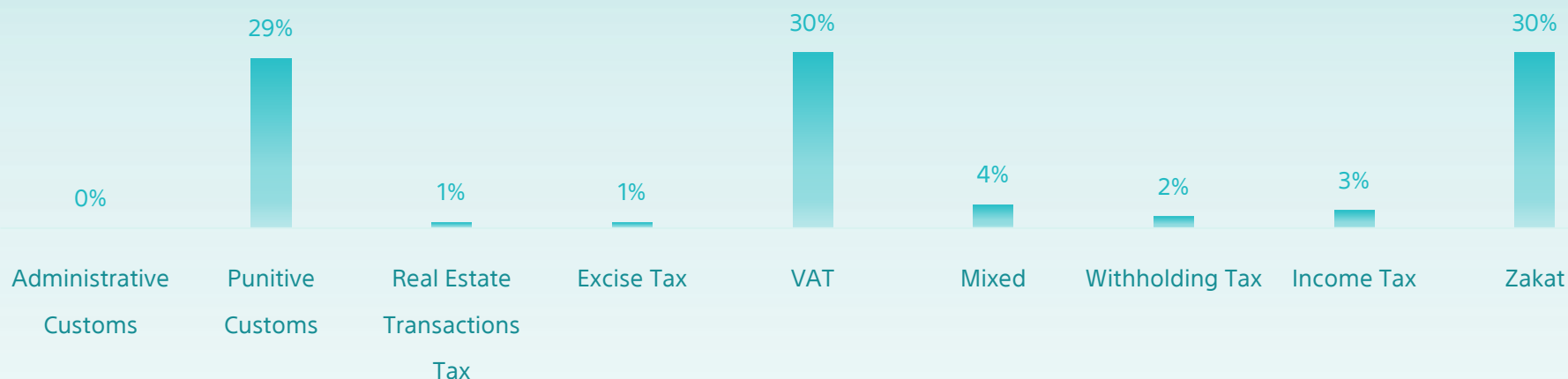
All Cases Report

Until Aug 2023



Initial Appeal Reconsider

Classification	Initial	Appeal	Reconsider	Total
Zakat	38,729	9,759	1,694	50,182
Income Tax	3,362	989	96	4,447
Withholding Tax	1,929	791	81	2,801
Mixed	4,583	1,363	142	6,088
VAT	41,094	7,319	781	49,194
Excise Tax	737	227	16	980
Real Estate Transactions Tax	1,279	184	26	1,489
Punitive Custom	42,149	3,893	319	46,361
Administrative Customs	422	178	36	636
Total	134,284	24,703	3,191	162,178



Top cases classification / type



Fine (VAT)
11%



Tax Assessment-
Discretion (Zakat)
15%



Tax Assessment -
Accounts (Zakat)
16%



Tax Return & Fine (VAT)
9%



Disposing of a restricted cleared merchandise
with a pledge not to dispose of.
(Customs)
18%

